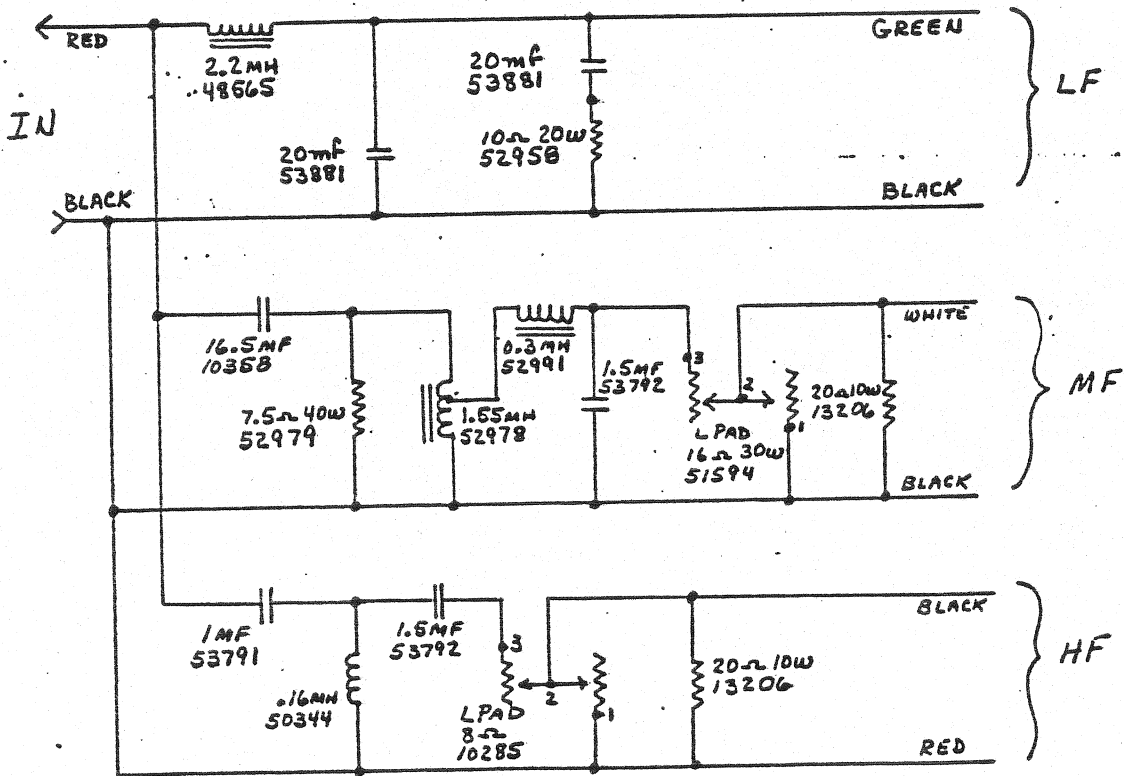


SPECIFICATIONS: NOTE ① * ± 2db

LOAD Z	LOW PASS	CROSS OVER	HIGH PASS	ATTENUATION
8	500 HZ	1 KHZ	2 KHZ	2 KHZ
	LF -2	LF -11 MF -11	MF -8	VAR
8		6.5 KHZ	12 KHZ	12 KHZ
		MF -13 HF -13*	HF -8	VAR

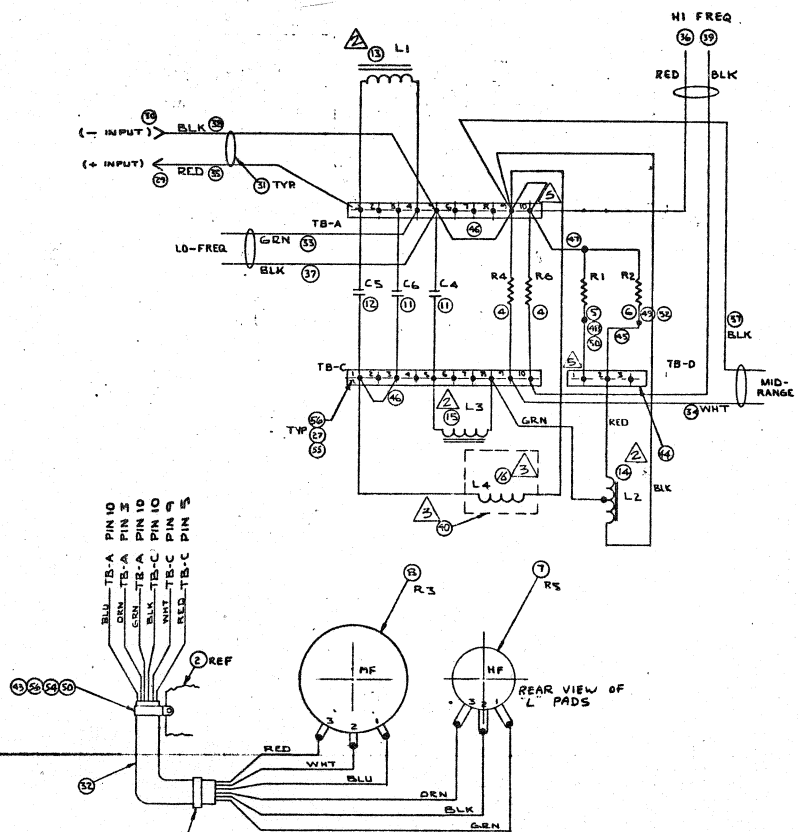
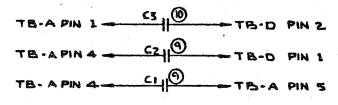
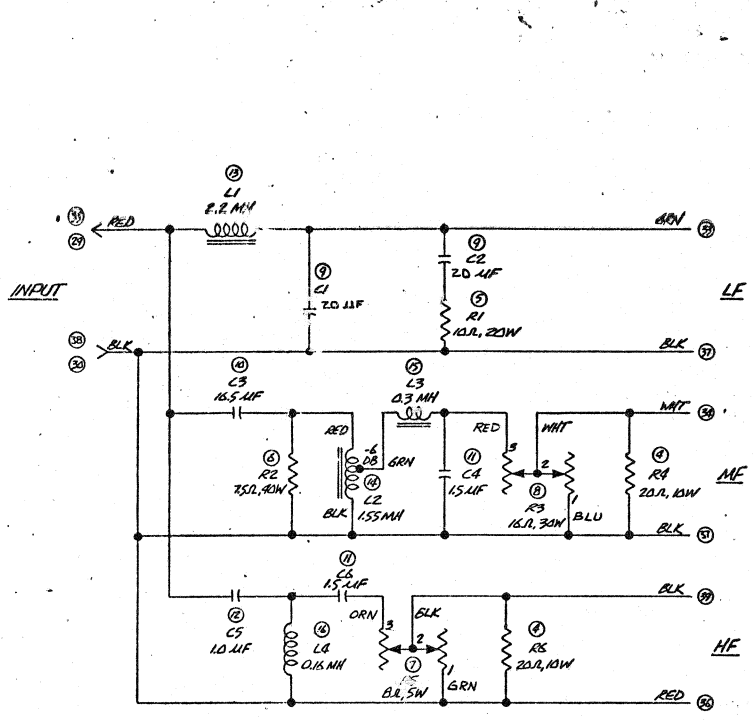
CIRCUIT:



NOTES:

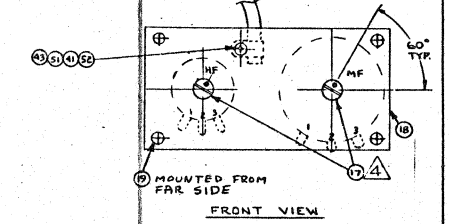
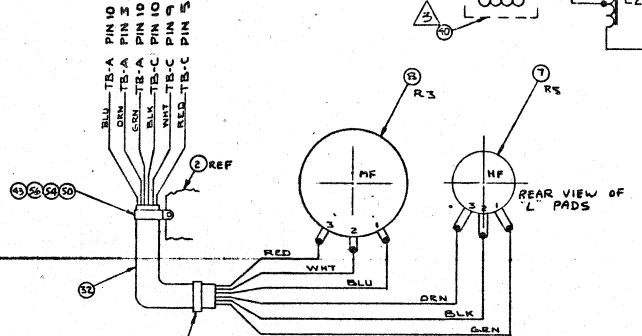
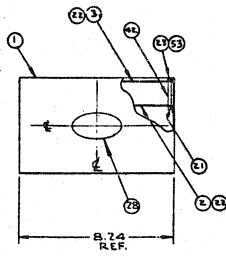
① USE STANDARD TEST FIXTURE

THESE DIMENSIONS AND SPECIFICATIONS ARE THE PROPERTY OF JAMES B. LANSING SOUND INC. THEY ARE ISSUED AS DIRECT CONTROLS AND SHALL NOT BE REPRODUCED, COPIED, OR MADE AS THE BASIS FOR MANUFACTURE OR SALE OF UNPATENTED EQUIPMENT THEREAFTER.



ITEM	PART NO	DESCRIPTION	QTY
1	55213	NETWORK CAN MRD 51037	1
2	52892	COVER	1
3	53809	PERFORATED COVER MRD 53814	1
4	12206	RESISTOR 20.1, 10W MRD 37091 R8, R6	2
5	52958	" 10.1, 20W MRD 52960 R1	1
6	52979	" 75.0, 40W MRD 52936 R2	1
7	10285	L-PAD BR	R5
8	51594	L-PAD BR	R3
9	53281	CAPACITOR 20 uF	C1 C2
10	10358	" 13.5 uF	C3
11	53192	" 1.5 uF MRD 53203	C4, C6
12	53171	" 10. uF MRD 53803	C5
13	48565	INDUCTOR 2.2 mH	L1
14	52978	" 155 mH	L2
15	52991	" 0.3 mH	L3
16	51944	" 0.16 mH	L4
17	2211	KNIB MRD 5291	2
18	52805	MAINTENANCE BOARD MRD 50291	1
19	51204	WASHER #3-32	2
20	11391	TERMINAL STRIP 10T	2
21	12843	SPEED NUT	2
22	53812	BUSHING	7
23	33936	SCREW 6-32 X 1/4 BLK OX	4
24			
25			
26	53813	BUSHING	1
27	11496	NUT 4-40	6
28	55212	ALUMINAL MRD 11189	1
29	50973	TERMINAL MALE	1
30	50289	" FEMALE	1
31	35353	CABLE TIE	2
32	53859	CABLE & WIRE 42" LG. MRD 53861	1
33	13226	WIRE GRN MRD 37051 30"	1
34	39795	" WHT MRD 37056 30"	1
35	10920	" RED MRD 37050 24"	1
36	39771	" RED " 42"	1
37	11789	" BLK MRD 37055 30"	2
38	10977	" BLK " 24"	1
39	39773	" BLK " 42"	1
40	52884	MAINTENANCE BOARD MRD 50291	1
41	11638	FLAT WASHER #6 I.D.	1
42	53810	STAND OFF	4
43	53804	CLAMP	2
44	52931	TERMINAL STRIP 3T	1
45	37583	JUMPER 1" MRD 37055	1
46	37587	JUMPER 2" MRD 37055	2
47	37591	JUMPER 3" MRD 37055	1
48	10042	SCREW #4-40 X 1/2 RD. HD.	2
49	20761	SCREW #6-32 X 1/2 RD. HD.	2
50	48514	KEPS NUT #4-40	3
51	53653	SCREW #6-32 X 1/8 FLAT HD.	1
52	89508	KEPS NUT #6-32	3
53	53867	WASHER #6 BLK OX	4
54	12802	WASHER #4	1
55	11509	LOCKWASHER #4 I.T.	6
56	10044	SCREW 4-40 X 1/8	7

- ⓐ INSTALL ON ITEM 32 BEFORE PLACING ITEM 32 THRU ITEM 3.
- ⓑ JUMPER
- ⓒ KNIB TO BE INSTALLED AS SHOWN WHEN SHAFT OF ITEM 7 F 8 IS ROTATED TO FULL "CW" POSITION. TOP OF KNIB TO PROTRUDE 25/32" ABOVE MTS. BOARD SURFACE.
- ⓓ ITEM 40 BONDED TO BOTTOM OF ITEM 2 WITH 50182'S ADHESIVE
- ⓔ ITEM 16 BONDED TO ITEM 40 WITH 50182'S ADHESIVE.
- ⓕ INDICATED ITEMS BONDED TO ITEM 1 WITH 50182'S ADHESIVE.
- 1 SEE 53004 REF FOR TEST SPECS.



NOTES:

REV	DATE	BY	CHKD	DATE	BY
1					
2					
3					
4					
5					
6					
7					
8					
9					
10					
11					
12					
13					
14					
15					
16					
17					
18					
19					
20					
21					
22					
23					
24					
25					
26					
27					
28					
29					
30					
31					
32					
33					
34					
35					
36					
37					
38					
39					
40					
41					
42					
43					
44					
45					
46					
47					
48					
49					
50					
51					
52					
53					
54					
55					
56					
57					
58					
59					
60					
61					
62					
63					
64					
65					
66					
67					
68					
69					
70					
71					
72					
73					
74					
75					
76					
77					
78					
79					
80					

JBL JAMES B. LANSING SOUND INC.
 10000 Wilshire Blvd., Los Angeles, Calif. 90033
 TITLE: MFD ITEM N333
 DATE: 4/27/71
 DRAWING NO: 55212
 SCALE: 1" = 1"